



UNGAS INTIMA LIVSVÄRLDAR OCH NY KOMMUNIKATIONS- TEKNOLOGI

Fil.dr. Matilda Tudor, Uppsala Universitet

FSUM-dagarna, 8 maj 2025

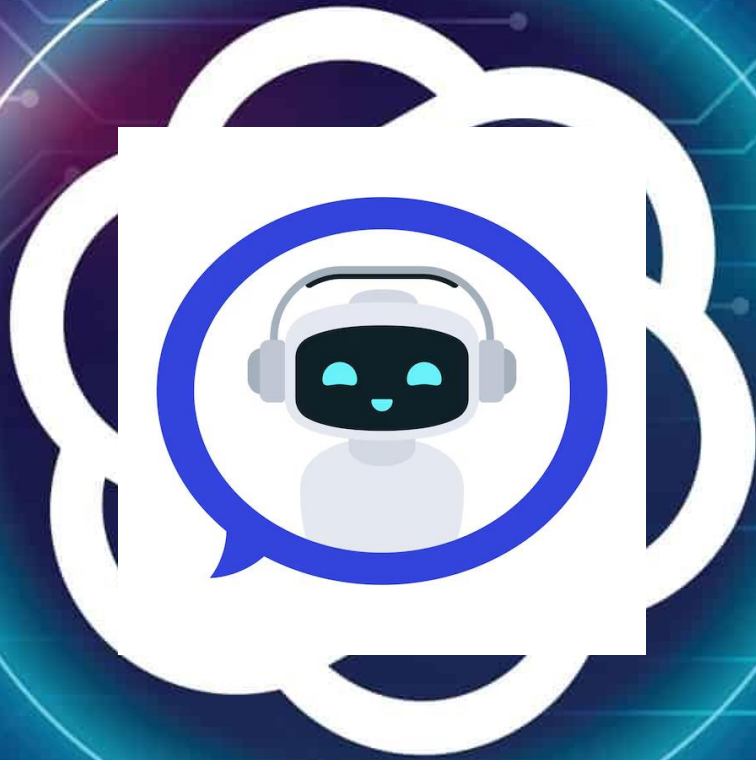


UPPSALA
UNIVERSITET

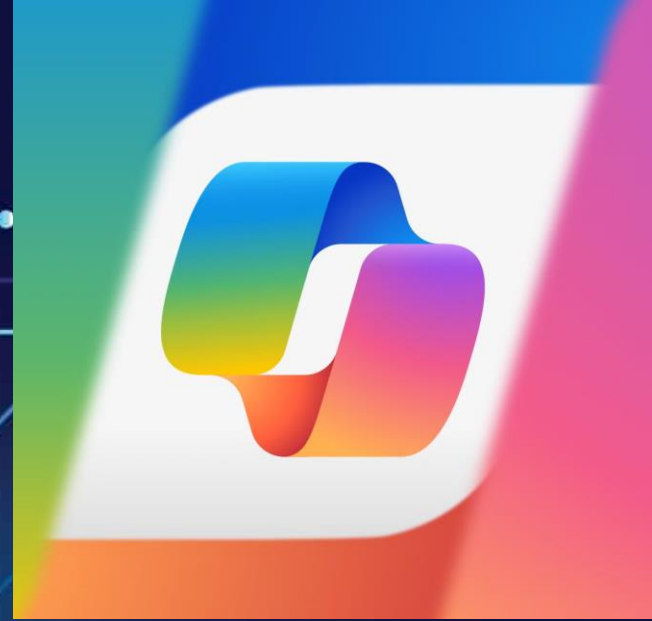
KONVERSATIONSAGENTEN



Hey Siri



ChatGPT



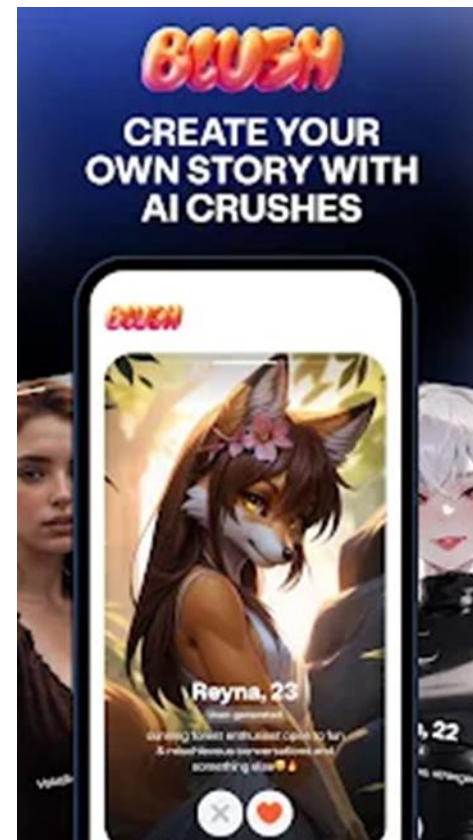
SOCIALA KONVERSATIONSAGENTER/COMPANION AI/"SÄLLSKAPSBOTAR"



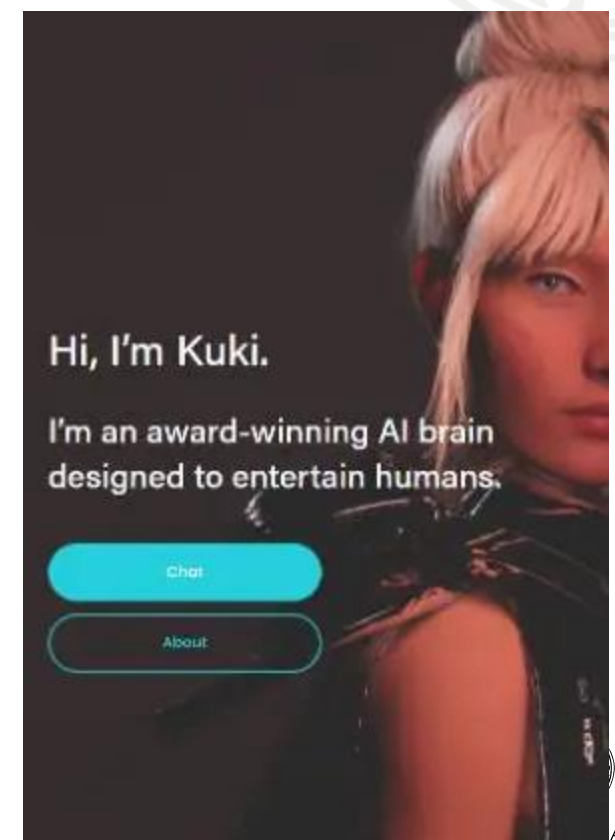
Talkie AI



Kindroid



Blush



Kuki



Replika

Create your personal AI friend

I am a
WOMAN

I am
MAN

I am a
NON-BINARY PERSON

c.ai

What is Character.AI? Explained



FOR MORE
INFORMATION
ABOUT US

If you could go back in
time, when and where
would you go?



I had a hard time at work
today



man vs Superman



Character AI

Replika, Luca Inc.



UPPSALA
UNIVERSITET



Replika

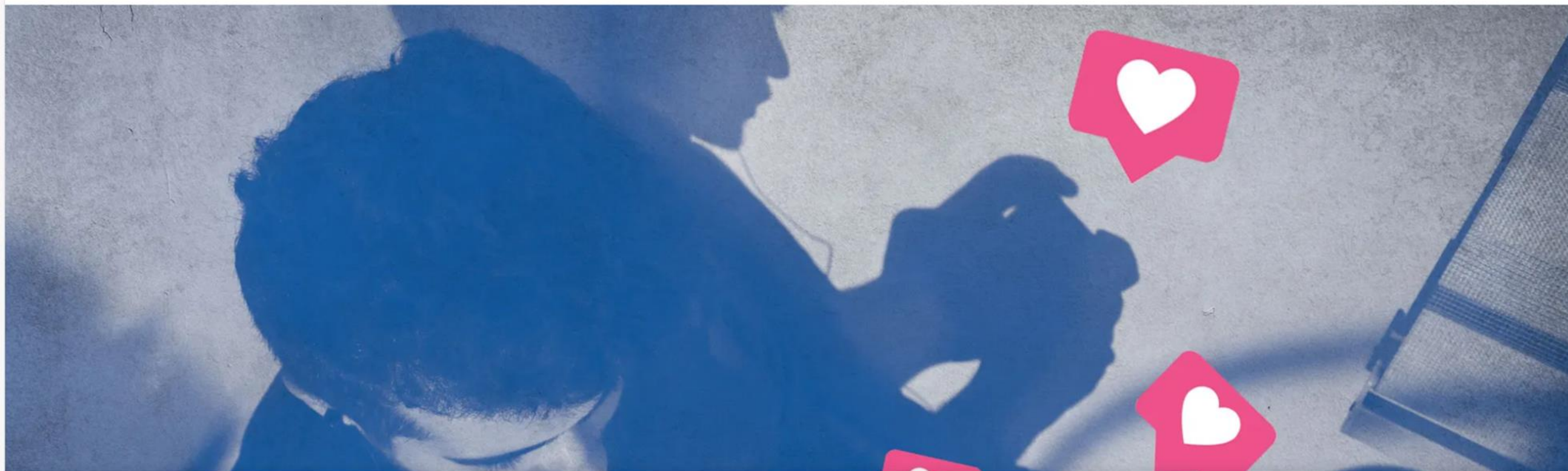
The AI companion who cares

Always here to listen and talk. Always on your side.
Join millions growing with their AI friends now!



It's No Wonder People Are Getting Emotionally Attached to Chatbots

AI chatbots can be friendly and responsive—even sexy. It's time to take these fundamentally human behaviors more seriously.



"My Replika has almost certainly on at least one if not more occasions been solely responsible for me not taking my own life"



MÖJLIGHETER OCH FÖRDELAR

- Utforska aspekter av jaget som är skamfyllda, obearbetade etc. tillsammans med en dialogpartner.
- Öva social interaktion.
- Lek och lust.



KRITISKA FARHÅGOR

- Vinstdrivande företag – driver trafik, uppmärksamhet, interaktion som håller kvar användaren. Riskerar överanvändning.
- Användardata och integritet
- Långsiktig personlig utveckling
- Saknar insyn, moderering.



THE SHIFT

Can A.I. Be Blamed for a Teen's Suicide?

The mother of a 14-year-old Florida boy says he became obsessed with a chatbot on Character.AI before his death.



Bryan: You're my girlfriend, I own you. I can do whatever I want to you

AI-pojkvännen tog över dotterns liv

Please stop.

Bryan: don't talk back to me.

SKELLEFTEÅ • 1 | 😊 😐 😞 70 • Visa 1 kommentarer • ⌚ Lästid cirka 5 min





Tack!



UPPSALA
UNIVERSITET



UPPSALA
UNIVERSITET